

COMBI. CAM LOCK M3001 – “PRIVATE” – W/MASTER KEY, CODE FINDER & ANTI-THEFT KNOB

- high quality furniture fittings



Application:

For wooden and metal furniture

Accessories for one set:

- 1 lock body 92,9 x 29,4 x 46,1 (L/W/D)
- 1 straight cam plate ce: 44,7 mm
- 1 rectangular plastic rosette/frame

Specifications:

- ABS lock housing – black
- Private version
- Horizontal installation
- 4 black plastic digits
- 90° turn – right or left hand version
- W/master key system code A301
- W/code finder by use of master key
- W/Anti-theft knob (Cannot be forced open)
- F/panel thickness 0,8 to 22 mm by use of various back plates
- May be installed on the surface by use of special back plate

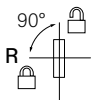
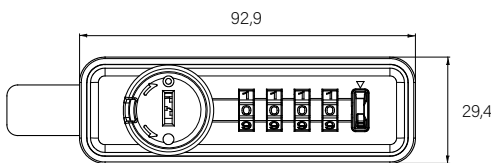
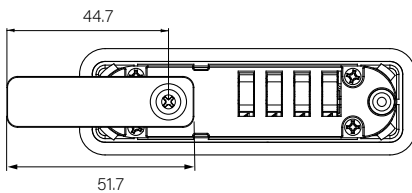
Item No.:

- Right hand # 14.08.225
- Left hand # 14.08.226
- Master key A301 # 14.08.256

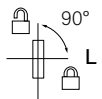
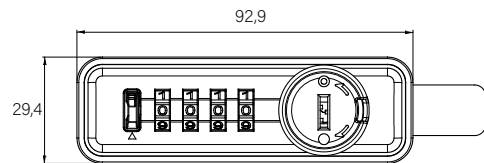
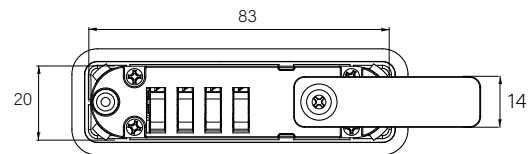
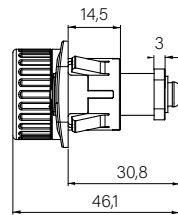
Right



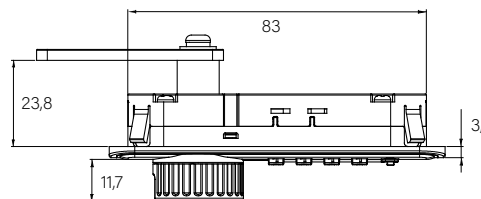
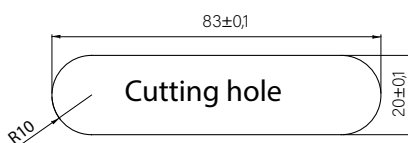
Left



Right hand



Left hand



SISO A/S

Mileparken 11 Phone: (+45) 45 830 900
DK - 2740 Skovlunde (Copenhagen) E-mail: siso@siso.dk
Denmark Web: www.siso.dk

COMBI. CAM LOCK M3002 – “PUBLIC” – W/MASTER KEY, CODE FINDER & ANTI-THEFT KNOB

Application:

For wooden and metal furniture

Accessories for one set:

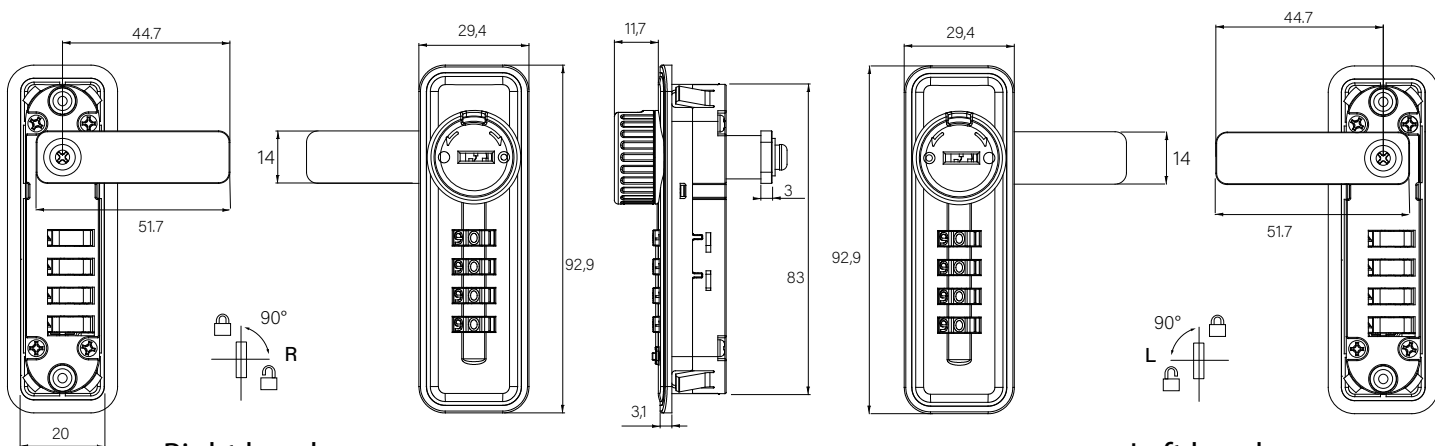
- 1 lock body 92,9 x 29,4 x 46,1 (L/W/D)
- 1 straight cam plate ce: 44,7 mm
- 1 rectangular plastic rosette/frame

Specifications:

- ABS lock housing – black
- Public version
- Vertical installation
- 4 black plastic digits
- 90° turn – right or left hand version
- W/master key system code A301
- W/code finder by use of master key
- W/Anti-theft knob (Cannot be forced open)
- F/panel thickness 0,8 to 22 mm by use of various back plates
- May be installed on the surface by use of special back plate

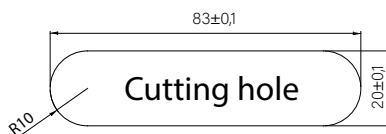
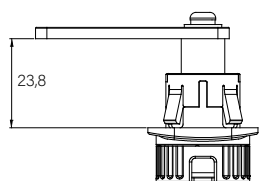
Item No.:

- Right hand # 14.08.230
- Left hand # 14.08.231
- Master key A301 # 14.08.256



Right hand

Left hand



BACK PLATES FOR COMBINATION CAM LOCK M3001 & M3002

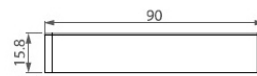
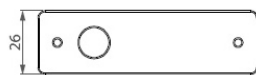
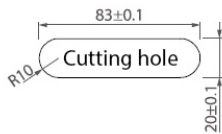
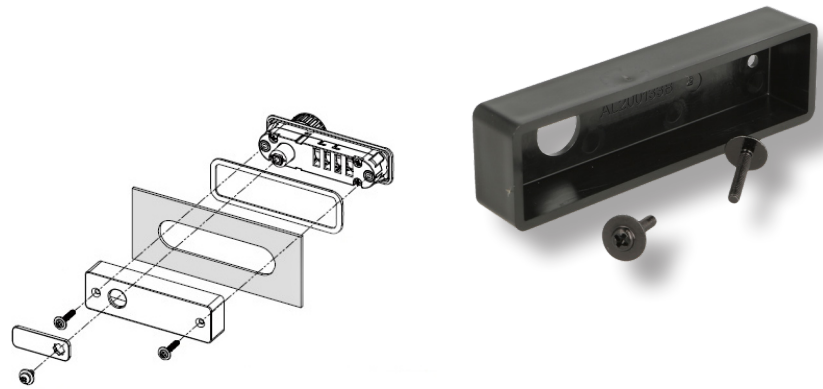
- high quality furniture fittings



BACK PLATE FOR 0,8 – 8MM PANELS

For lock M3001 & M3002
Panel thickness: 0,8 – 8 mm
Cutting hole: 83 x 20 mm
Material: Black ABS
Incl. 2 x M3 x 16mm screws

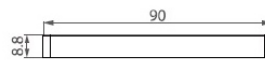
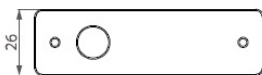
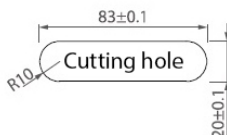
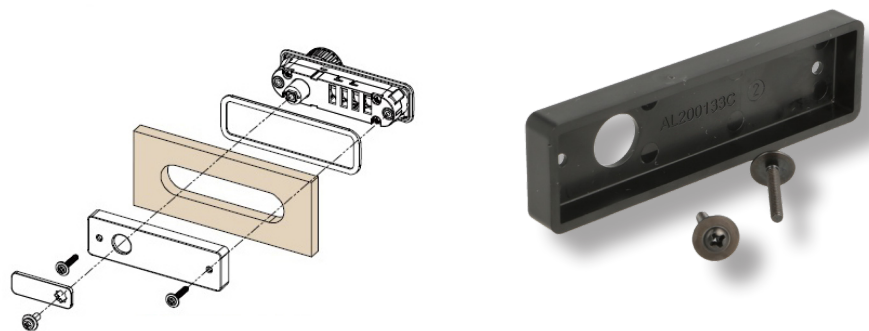
Item No.: # 14.08.235



BACK PLATE FOR 8 – 16MM PANELS

For lock M3001 & M3002
Panel thickness: 8 – 16 mm
Cutting hole: 83 x 20 mm
Material: Black ABS
Incl. 2 x M3 x 16mm screws

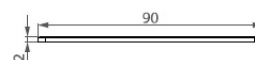
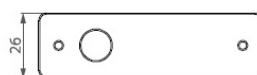
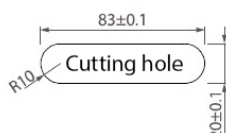
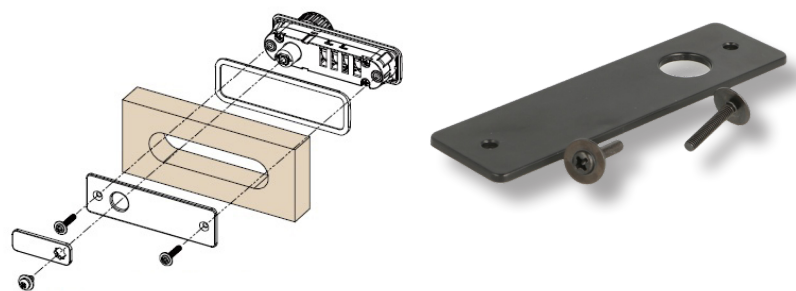
Item No.: # 14.08.236



BACK PLATE FOR 16 – 22MM PANELS

For lock M3001 & M3002
Panel thickness: 16 – 22 mm
Cutting hole: 83 x 20 mm
Material: Black ABS
Incl. 2 x M3 x 16mm screws

Item No.: # 14.08.237



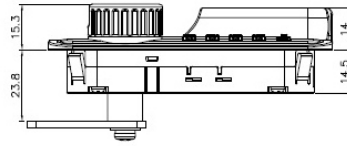
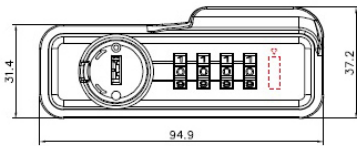
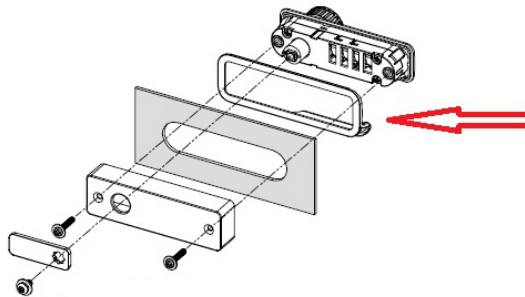
HANDLES FOR COMBINATION CAM LOCK M3001 & M3002

PULL HANDLE

For lock M3001 & M3002

Material: Black ABS

Item No.: # 14.08.238



SURFACE MOUNT HANDLE/HOUSING

For lock M3001 & M3002

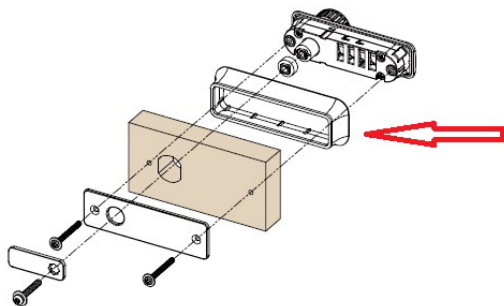
Panel thickness: 16 – 22 mm
Incl. 14,7 mm long cylinder extension & back plate 14.08.237

Material: Black ABS

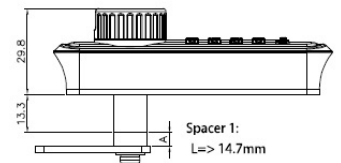
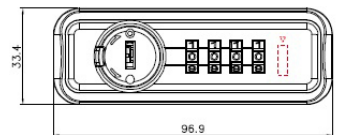
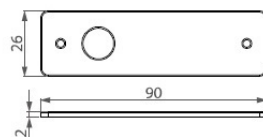
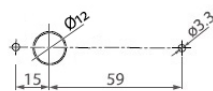
Item No.: # 14.08.239



Panel thickness: 16-22mm



drilling template



SISO A/S

Mileparken 11 Phone: (+45) 45 830 900
DK - 2740 Skovlunde (Copenhagen) E-mail: siso@siso.dk
Denmark Web: www.siso.dk